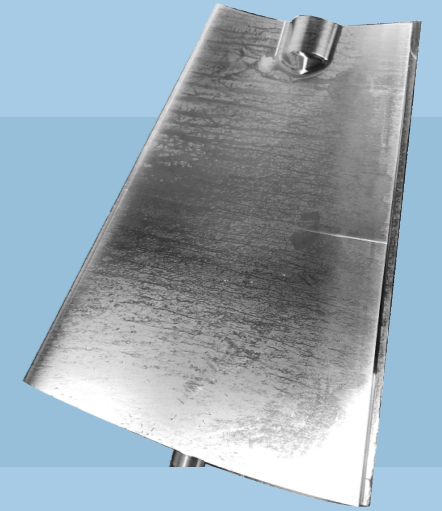


Project list of  
**HYDRO TURBINE COMPONENTS**



# 1.

## Guide Vane



SR NO.	YEAR	PROJECT	COUNTRY	METAL	QTY	CASTING WEIGHT
1	2022	LOS NIHUILES	Argentina, South America	CA6NM	20	74.30
2	2023	PORTEZUELOS II	Argentina, South America	CA6NM	32	22.00
3	2018	TAMBORIL	Brazil, South America	CA6NM	32	430.00
4	2018	POCO FUNDO	Brazil, South America	CA6NM	44	62.00
5	2019	FOZ DO ESTRELA	Brazil, South America	CA6NM	40	165.00
6	2020	CURUA UNA	Brazil, South America	CA6NM	24	483.00
7	2021	JESUITA	Brazil, South America	90-60	32	525.00
8	2020	XACBAL	Guatemala, Central America	CA6NM	21	121.00
9	2022	PALO VIEJO	Guatemala, Central America	CA6NM	44	94.00
10	2017	LOIS	Canada, North America	CA6NM	20	151.00
11	2019	TORNALITO	Canada, North America	CA6NM	16	213.30
12	2022	COCHRANE-2	Canada, North America	Gx4CrNi 13-4+QT1	20	1870.00
13	2022	TALTON	Canada, North America	Gx4CrNi 13-4+QT1	20	795.00
14	2021	RAPEL	Chile, South America	Gx4CrNi 13-4+QT1	40	783.00
15	2017	ESCUELA DE MIMAS	Chile, South America	CA6NM	80	17.80
16	2019	CARLOS LLERAS	Chile, South America	CA6NM	25	246.00
17	2023	LA OLLA	Chile, South America	CA6NM	20	228.00
18	2023	ENCANTO	Costa Rica, Central America	CA6NM	32	53.50

SR NO.	YEAR	PROJECT	COUNTRY	METAL	QTY	CASTING WEIGHT
1	2018	KALPONG	Andaman Nicobar	Gx4CrNi 13-4+QT1	48	7.00
2	2019	KABU-16 HEP	Burundi	CA6NM	32	60.00
3	2023	VALLABREGUES	France	Gx4CrNi 13-4+QT1	24	819.00
4	2018	GAILDORF	Germany	Gx4CrNi 13-4+QT1	68	38.00
5	2021	ALZWERKE	Germany	Gx4CrNi 13-4+QT1	21	120.00

SR NO.	YEAR	PROJECT	COUNTRY	METAL	QTY	CASTING WEIGHT
1	2015	ANI	India	CA6NM	32	22.00
2	2015	CASTEL MADAMA LARGE	India	CA6NM	16	92.00
3	2015	CASTEL MADAMA SMALL	India	CA6NM	16	53.00
4	2016	MEGH	India	Gx4CrNi 13-4+QT1	32	11.00
5	2016	NPG-S	India	CA6NM	20	17.80
6	2016	NPG-L	India	CA6NM	32	35.50
7	2016	LHKH	India	CA6NM	48	35.00
8	2016	MEGHALAY HEP SMALL	India	Gx4CrNi 13-4+QT1	21	37.00
9	2016	MEGHALAY HEP LARGE	India	Gx4CrNi 13-4+QT1	36	34.00
10	2016	SOLAYAR	India	CA6 NM	60	99.00
11	2016	NPG-L	India	CA6NM	2	43.00
12	2016	DKPS	India	CA6NM	32	113.00
13	2017	DIKSHI	India	CA6NM	66	40.00
14	2017	LAKROH	India	CA6NM	20	8.00
15	2017	TILOTH PH	India	Gx4CrNi 13-4+QT1	120	123.00
16	2018	MAY HO HYDRO	India	CA6NM	44	13.00
17	2018	GANOL	India	CA6NM	40	32.00
18	2018	BHPL	India	CA6NM	96	39.00

SR NO.	YEAR	PROJECT	COUNTRY	METAL	QTY	CASTING WEIGHT
19	2018	BHABHA	India	Gx4CrNi 13-4+QT1	16	12.00
20	2018	LAMBADUG HYDRO	India	CA6NM	4	37.00
21	2018	BHPL	India	CA6NM	48	36.00
22	2018	SKHPL	India	CA6NM	16	27.00
23	2019	HUPL	India	CA6NM	48	24.00
24	2019	LR03 LADAKH	India	Gx4CrNi 13-4+QT1	27	7.00
25	2019	HUPL	India	CA6NM	24	24.00
26	2019	BHPL	India	Gx4CrNi 13-4+QT1	20	38.00
27	2019	NAITWAR MORI	India	CA6NM	48	240.00
28	2019	CHATTANKOTUNA-DA II	India	CA6NM	58	16.00
29	2020	SELTU MUSRANG SHPP	India	Gx4CrNi 13-4+QT1	68	24.00
30	2020	HUPL	India	CA6NM	24	24.00
31	2020	RANA HEP	India	CA6NM	37	21.00
32	2020	SHUAKHEVI	India	WCC	3	42.00
33	2020	TANMY	India	CA6NM	32	100.00
34	2020	KARBI LANGPI	India	CA6NM	10	133.00
35	2020	TASHIDING	India	CA6NM	13	169.00
36	2021	NAUGADH HEP	India	Gx4CrNi 13-4+QT1	24	14.00
37	2022	DIKSHI	India	CA6NM	20	44.00
38	2022	JOGINI-2	India	CA6NM	20	13.00
39	2022	KOPILI HEP	India	Gx4CrNi13-4+QT2	72	95.00
40	2022	JD-NPH	India	CA6NM	11	57.00
41	2022	BHPL	India	CA6NM	48	38.00
42	2022	KOPILI HEP	India	CA6NM	48	104.00
43	2022	LOWER KOPILI	India	Gx4CrNiMo 16-5-1+QT	60	307.00
44	2022	SANDHYA	India	CA6NM	30	23.00

SR NO.	YEAR	PROJECT	COUNTRY	METAL	QTY	CASTING WEIGHT
45	2023	SINGOLI BHATWARI	India	CA6NM	41	116.30
46	2023	REHAR	India	Gx4CrNi 13-4+QT1	60	130.00
47	2023	SHIVASAMUDRAM	India	Gx4CrNi 13-4+QT1	88	44.00
48	2023	SHIVASAMUDRAM	India	Gx4CrNi 13-4+QT1	60	25.00

SR NO.	YEAR	PROJECT	COUNTRY	METAL	QTY	CASTING WEIGHT
1	2017	AMB KARAI 2	Indonesia	CA6NM	51	17.80
2	2017	HASANG	Indonesia	Gx4 CrNi 13-4	60	47.00
3	2018	CIKAENGAN-2 HPP	Indonesia	Gx4CrNi 13-4+QT1	43	18.30
4	2018	LARONA HYDRO POWER	Indonesia	CA6NM	20	506.00
5	2018	SION HEP	Indonesia	CA6NM	36	55.00
6	2018	WAMPU	Indonesia	Gx4CrNi 13-4+QT1	60	69.00
7	2019	CIKANDANG	Indonesia	Gx4CrNi 13-4+QT1	48	30.00
8	2019	AMB KARAI	Indonesia	CA6NM	48	18.00
9	2020	KARAI 7	Indonesia	CA6NM	32	32.00
10	2021	KETAUN 3 HPP	Indonesia	CA6NM	48	46.00
11	2022	YAENTU	Indonesia	CA6NM	32	32.00
12	2022	HASANG	Indonesia	CA6NM	80	44.00
13	2022	WAMPU	Indonesia	Gx4CrNi 13-4+QT1	20	62.00

SR NO.	YEAR	PROJECT	COUNTRY	METAL	QTY	CASTING WEIGHT
1	2015	POMPEGNINO LARGE	Italy	CA6NM	20	261.00
2	2015	POMPEGNINO SMALL	Italy	CA6NM	20	255.00
3	2016	PONT SAINT MARTIN	Italy	CA6NM	16	9.00
4	2016	BRAONE	Italy	CA6NM	20	8.00
5	2022	AGRI	Italy	CA6NM	40	74.00

SR NO.	YEAR	PROJECT	COUNTRY	METAL	QTY	CASTING WEIGHT
1	2022	HARUCHIKA	Japan	CA6NM	36	63.00
2	2023	ODAGIRI	Japan	CA6NM	48	617.00
3	2018	WANJII HPP SMALL	Kenya	CA6NM	44	7.00
4	2018	WANJII HPP LARGE	Kenya	CA6NM	36	8.00
5	2017	NAM-CUN	Laos	Gx4CrNi 13-4+QT1	40	115.00
6	2017	NAM BAN 3	Laos	Gx4CrNi 13-4+QT1	41	38.00
7	2019	NAM KONG 3	Laos	Gx4CrNi 13-4+QT1	60	68.00
8	2019	UPPER NAM HTUM	Myanmar	Gx4CrNi 13-4+QT1	16	75.00

SR NO.	YEAR	PROJECT	COUNTRY	METAL	QTY	CASTING WEIGHT
1	2016	DORDIKHOLA	Nepal	CA6NM	48	39.00
2	2016	KABELI HYDRO POWER	Nepal	Gx4CrNi 13-4+QT1	20	77.00
3	2016	RSGD	Nepal	CA6NM	140	105.00
4	2016	SOLU	Nepal	Gx4CrNi 13-4+QT1	50	42.00
5	2017	IWA KHOLA	Nepal	Gx4CrNi 13-4+QT1	43	21.00
6	2017	UPPER KHIMTI	Nepal	CA6NM	60	12.00
7	2017	UPPER NAUGADH HEP	Nepal	Gx4CrNi 13-4+QT1	43	14.00
8	2017	IWA KHOLA	Nepal	Gx4CrNi 13-4+QT1	43	22.00
9	2016	MEGHALAY HEP LARGE	India	Gx4CrNi 13-4+QT1	36	34.00
10	2018	UPPER BALEPHI-A	Nepal	CA6NM	66	37.00
11	2018	KALANGA GAD	Nepal	Gx4CrNi 13-4+QT1	40	188.00
12	2019	TAKSAR PIKHUWA	Nepal	CA6NM	40	13.00
13	2019	MAI BENI HEP	Nepal	CA6NM	46	21.00
14	2019	LIKHU A	Nepal	Gx4CrNi 13-4+QT1	40	21.00
15	2019	LIKHU B	Nepal	Gx4CrNi 13-4+QT1	40	42.00
16	2019	LIKHU 2 11	Nepal	Gx4CrNi 13-4+QT1	20	28.00

SR NO.	YEAR	PROJECT	COUNTRY	METAL	QTY	CASTING WEIGHT
17	2019	LIKHU 2 22	Nepal	Gx4CrNi 13-4+QT1	20	51.00
18	2019	TAKSAR PIKHUWA	Nepal	CA6NM	40	53.00
19	2020	LIKHU A	Nepal	Gx4CrNi 13-4+QT1	20	21.00
20	2020	PHPL	Nepal	CA6NM	16	39.00
21	2020	LIKHU-2 22MW	Nepal	Gx4CrNi 13-4+QT1	20	43.00
22	2021	DNU3	Nepal	Gx4CrNi 13-4+QT1	24	124.00
23	2021	SANDHYA HEP	Nepal	CA6NM	20	23.50
24	2021	MADHYA TARAK-HOLA	Nepal	CA6NM	35	9.50
25	2021	DARAM KHOLA	Nepal	CA6NM	40	25.00
26	2021	TINA	Nepal	Gx4CrNi 13-4+QT1	60	24.00
27	2021	PNCR-28	Nepal	CA6NM	21	38.00
28	2021	MARSYANGDI	Nepal	X3CrNiMo 13-4+QT780	24	162.00
29	2022	IWA KHOLA HEP	Nepal	Gx4CrNi 13-4+QT1	20	19.00
30	2022	W1	Nepal	CA6NM	16	9.60
31	2022	R1	Nepal	CA6NM	32	27.00
32	2022	V1	Nepal	CA6NM	24	25.40
33	2022	LIKHU 6 MW	Nepal	Gx4CrNi 13-4+QT1	20	21.00
34	2022	LIKHU 12 MW	Nepal	Gx4CrNi 13-4+QT1	20	42.00

SR NO.	YEAR	PROJECT	COUNTRY	METAL	QTY	CASTING WEIGHT
1	2023	HIGHBANK HEP	New Zealand	CA6NM	20	185.00
2	2023	RANGIPO POWER STATION	New Zealand	CA6NM	26	140.00
3	2020	CHALLAWA	Nigeria	CA6NM	32	75.00
4	2022	CHER	Nigeria	CA6NM	48	186.00
5	2020	RANA HEP	Norway	CA6NM	37	21.00
6	2021	KURASFOSSEN KRAFTWERK	Norway	Gx4CrNi 13-4+QT1	24	65.00

SR NO.	YEAR	PROJECT	COUNTRY	METAL	QTY	CASTING WEIGHT
1	2015	ASIGA	Philippines	CA6NM	36	22.00
2	2020	ANGAT 3	Philippines	CA6NM	24	27.50
3	2020	ANGAT 1&2	Philippines	CA6NM	44	13.00
4	2022	ANGAT-4	Philippines	CA6NM	24	45.50
5	2022	ANGAT-5	Philippines	CA6NM	24	103.00

SR NO.	YEAR	PROJECT	COUNTRY	METAL	QTY	CASTING WEIGHT
1	2021	LA BARCA	Spain	Gx4CrNi 13-4+QT1	40	325.00
2	2021	SAN SEBASTIAN	Spain	CA6NM	32	67.00
3	2022	AGRI	Spain	CA6NM	40	214.00
4	2023	ALCALA DEL RIO	Spain	CA6NM	20	466.00
5	2023	C.H. CARPIO	Spain	CA6NM	20	185.40
6	2022	CANELLES	Spain	CA6NM	40	214.00

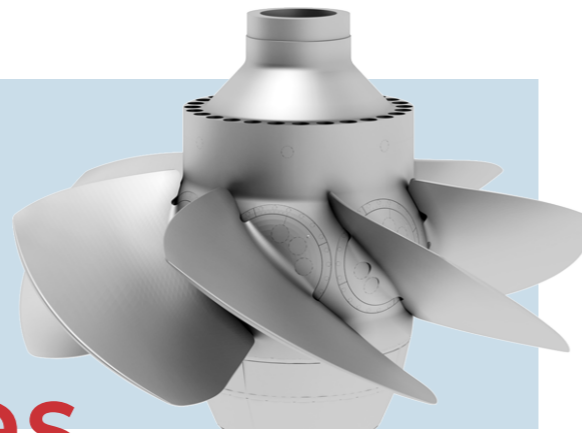
SR NO.	YEAR	PROJECT	COUNTRY	METAL	QTY	CASTING WEIGHT
1	2017	ACHWA LARGE	Uganda	CA6NM	48	212.00
2	2017	ACHWA SMALL	Uganda	CA6NM	16	93.00
3	2018	ACHWA REVER LARGE	Uganda	CA6NM	52	212.00
4	2018	ACHWA REVER SMALL	Uganda	CA6NM	20	93.00
5	2019	KIKAGATI	Uganda	CA6NM	52	536.00

SR NO.	YEAR	PROJECT	COUNTRY	METAL	QTY	CASTING WEIGHT
1	2015	DAK TER-II	Vietnam	CA6NM	20	10.50
2	2016	ALIN B1	Vietnam	CA6NM	46	76.00
3	2016	NAM BAN 2	Vietnam	Gx4CrNi 13-4+QT1	44	30.00
4	2016	NHAN HAC A	Vietnam	Gx4CrNi 13-4+QT1	44	100.00

SR NO.	YEAR	PROJECT	COUNTRY	METAL	QTY	CASTING WEIGHT
19	2017	NHAN HAC A	Vietnam	Gx4CrNi 13-4+QT1	44	107.00
20	2017	SU PAN 1 HPP	Vietnam	Gx4CrNi 13-4+QT1	5	74.00
21	2017	NMPA	Vietnam	CA6NM	34	35.00
22	2017	NHAN HAC B	Vietnam	GS20Mn5+QT	26	335.00
23	2017	CA NAN 2	Vietnam	CA6NM	44	25.00
24	2017	NHAN HAC B HEP	Vietnam	G20MN5+QT	26	255.00
25	2018	DAKPIHAO	Vietnam	CA6NM	32	64.60
26	2019	TRUA-2	Vietnam	CA6NM	36	11.00
27	2019	DAK TRUA2	Vietnam	CA6NM	36	13.00
28	2019	NGAN TRUOI HEP	Vietnam	CA6NM	48	330.00
29	2020	DAK MI 2	Vietnam	Gx4CrNi 13-4+QT1	20	218.00
30	2020	ALIN B1	Vietnam	CA6NM	42	62.10
31	2020	NAM LUM II	Vietnam	CA6NM	32	47.00
32	2020	IA GRANG 1 HP	Vietnam	CA6NM	32	30.00
33	2020	NAM LUM 1	Vietnam	CA6NM	32	20.45
34	2020	HUA BUN HEP	Vietnam	CA6NM	44	35.00
35	2020	DA B'RLLEN HPP	Vietnam	CA6NM	40	47.00
36	2021	NGTR 4	Vietnam	CA6NM	16	116.00
37	2021	NGTR-4 KAPLAN	Vietnam	CA6NM	16	135.00
38	2021	NAM XE	Vietnam	CA6NM	36	53.00
39	2021	TRA PHONG	Vietnam	CA6NM	40	120.00
40	2021	QUANG NGUYEN	Vietnam	CA6NM	40	18.00
41	2021	CHI LU	Vietnam	CA6NM	40	31.00
42	2021	NAM CUM 2 HEP	Vietnam	CA6NM	32	65.00
43	2021	NAM CUM 3 HEP	Vietnam	CA6NM	32	126.00
44	2022	NAM PI HEP	Vietnam	Gx4CrNi 13-4+QT1	40	17.00

SR NO.	YEAR	PROJECT	COUNTRY	METAL	QTY	CASTING WEIGHT
45	2022	NUOC BUOU	Vietnam	CA6NM	32	29.50
46	2022	RE-1	Vietnam	CA6NM	20	37.00
47	2022	IALY	Vietnam	CA6NM	24	685.00
48	2023	NAM BUM	Vietnam	Gx4CrNi 13-4+QT1	32	35.30
49	2023	NAM DICH	Vietnam	Gx4CrNi 13-4+QT1	32	15.35
50	2023	NUOC LONG	Vietnam	Gx4CrNi 13-4+QT1	48	14.35

# 2.



## Runner Blades

NO.	YEAR	DESCRIPTION	PROJECT	COUNTRY	METAL	QTY	CASTING WEIGHT
1	2018	Runner Blade	POCO FUNDO	Brazil, South America	CA6NM Type2	26	45
2	2018	Kaplan Blade	TAMBORIL	Brazil, South America	CA6NM Type2	10	830
3	2018	Runner Blade	HULL2 CCW	Canada, North America	CA6NM Type2	136	154
4	2017	Runner Blade	LOIS	Canada, North America	CA6NM Type 2	13	183
5	2019	Runner Blade	TORNALITO	Canada, North America	CA6NM	13	340
6	2015	Runner Blade	LA CHUCHILLA	Panama, Central America	CA6NM Type2	26	41
7	2021	Runner Blade	LA CHUCHILLA	Panama, Central America	CA6NM Type2	13	29.4
8	2023	Runner Blade	CARLOS LLERAS RESTREPO	Colombia, South America	CA6NM	13	321
9	2018	Runner Blade	ESCUELA DE MIMAS	Colombia, South America	CA6NM Type2	65	70
10	2017	Runner Blade	SANTA LORENZA	Peru, South America	CA6NM Type2	26	73
11	2023	Runner Blade	ENCANTO	Costa Rica, Central America	CA6NM Type2	39	74.3
12	2022	Runner Blade	XACBAL	Guatemala, Central America	CA6NM Type2	30	187

NO.	YEAR	DESCRIPTION	PROJECT	COUNTRY	METAL	QTY	CASTING WEIGHT
1	2023	Runner Blade	PORTEZUELOS II	Argentina	CA6NM Type2	13	32
2	2022	Kaplan_Blade	GRATKORN	Austria, Europe	Gx4CrNi 13-4+QT1	8	1830
3	2021	Runner Blade	KURASFOSSEN KRAFTWERK	Norway, Europe	CA6NM Type2	13	85
4	2019	Runner Blade	HENSFOSS	Norway, Europe	CA6NM Type2	13	865
5	2020	KAPLAN Blade	HENSFOSS	Norway, Europe	CA6NM	5	853

NO.	YEAR	DESCRIPTION	PROJECT	COUNTRY	METAL	QTY	CASTING WEIGHT
1	2021	Runner Blade	SALLSJO	Sweden, Europe	CA6NM Type2	17	498
2	2019	Runner Blade	KABU-16 HEP	Burundi	CA6NM Type2	26	65
3	2022	Runner Blade	KABU-16 HEP	Burundi	CA6NM Type2	13	65

NO.	YEAR	DESCRIPTION	PROJECT	COUNTRY	METAL	QTY	CASTING WEIGHT
1	2015	Runner Blade	FUE2	India	CA6NM Type2	13	67
2	2015	Runner Blade	99	India	CA6NM Type2	13	120
3	2015	Runner Blade	99	India	CA6NM Type2	13	62
4	2015	Runner Blade	ANI	India	CA6NM Type2	39	31
5	2016	Runner Blade	NPG_LARGE	India	CA6NM Type2	26	68
6	2016	Runner Blade	NPG_SMALL	India	CA6NM Type2	13	43
7	2016	Runner Blade	LHKH	India	CA6NM Type2	52	71
8	2017	Runner Blade	DKPS	India	CA6NM Type2	26	134
9	2018	Runner Blade	MAY HO HYDRO	India	CA6NM Type2	34	19
10	2019	Runner Blade	GODAVARI PENNA	India	CA6NM Type2	35	845
11	2019	Runner Blade	CHATTANKOTUNADA- II	India	CA6NM Type2	45	27
12	2019	Runner Blade	NAITWAR MORI-SMALL	India	CA6NM Type2	26	410
13	2020	Runner Blade	NAITWAR MORI-LARGE	India	CA6NM Type2	26	553
14	2020	Runner Blade	BHILANGANA-3	India	Gx4CrNi 13-4+QT1	13	47
15	2020	Runner Blade	TANMY	India	CA6NM Type2	26	136
16	2020	Runner Blade Short	DHAULIGANGA-SMALL	India	CA6NM	13	78
17	2020	Runner Blade Long	DHAULIGANGA-LARGE	India	CA6NM	13	197
18	2021	Runner Blade	BHILANGANA-3	India	CA6NM Type2	13	48.5
19	2022	Runner Blade	TEESTA-3	India	CA6NM Type2	13	18
20	2022	Runner Blade	DIKSHI	India	CA6NM Type2	45	49
21	2022	Runner Blade	JOGINI-2	India	CA6NM Type2	20	6

NO.	YEAR	DESCRIPTION	PROJECT	COUNTRY	METAL	QTY	CASTING WEIGHT
22	2022	Runner Blade	KAMENG HEP	India	CA6NM Type2	15	300
23	2022	Runner Blade	LHKH	India	CA6NM Type2	3	152
24	2022	Runner Blade	KOPI LI HEP	India	CA6NM Type2	13	138
25	2022	Runner Blade	SANDHYA	India	Gx4CrNi 13-4+QT1	16	20
26	2023	Runner Blade	KARBI-LANGPI	India	CA6NM Type2	15	166.7
27	2023	Runner Blade	TASHIDING	India	CA6NM	15	261
28	2023	Runner Blade	REHAR	India	Gx4CrNi 13-4+QT1	52	233
29	2023	Runner Blade	JORETHANG 02	India	CA6NM	26	703
30	2023	Runner Blade	LOWER KOPI LI 2.5MW	India	Gx4CrNiMo 16-5-1+QT	39	66

NO.	YEAR	DESCRIPTION	PROJECT	COUNTRY	METAL	QTY	CASTING WEIGHT
1	2018	Runner Blade	KARAI	Indonesia	CA6NM Type2	26	35
2	2018	Runner Blade	CIKAENGAN-2 HPP	Indonesia	CA6NM Type2	15	35
3	2018	Runner Blade	SION	Indonesia	CA6NM Type2	26	72
4	2019	Runner Blade	AMB KARAI 2	Indonesia	CA6NM Type2	13	34
5	2020	Runner Blade	KARAI	Indonesia	CA6NM Type2	26	35
6	2020	Runner Blade	SEMANGKA	Indonesia	CA6NM Type2	13	375
7	2021	Runner Blade	KETAUN 3 HPP	Indonesia	CA6NM Type2	39	59.5
8	2022	Runner Blade	SION HEP	Indonesia	CA6NM Type2	26	84
9	2022	Runner Blade	YANTU	Indonesia	CA6NM Type2	26	36

NO.	YEAR	DESCRIPTION	PROJECT	COUNTRY	METAL	QTY	CASTING WEIGHT
1	2016	KAPLAN Blade	PONT SAINT MARTIN	Italy	Gx4 CrNi 13-4	7	139
2	2017	Runner Blade	CARDANO	Italy	CA6NM Type2	17	174
3	2020	Runner Blade	QUART	Italy	CA6NM Type2	26	220
4	2022	Runner Blade	AGRI	Italy	CA6NM Type2	34	40

NO.	YEAR	DESCRIPTION	PROJECT	COUNTRY	METAL	QTY	CASTING WEIGHT
1	2018	Runner Blade	TOMATO	Japan	CA6NM Type2	39	53
2	2016	Runner Blade	RSGD	Nepal	CA6NM Type2	75	305
3	2019	Runner Blade	LIKHU	Nepal	CA6NM	51	117
4	2019	Runner Blade	LIKHU 2X22	Nepal	CA6NM	30	126
5	2019	Runner Blade	LIKHU 2X22	Nepal	Gx4CrNi 13-4+QT1	30	47
6	2020	Runner Blade	LIKHU 2X22	Nepal	Gx4CrNi 13-4+QT1	15	50

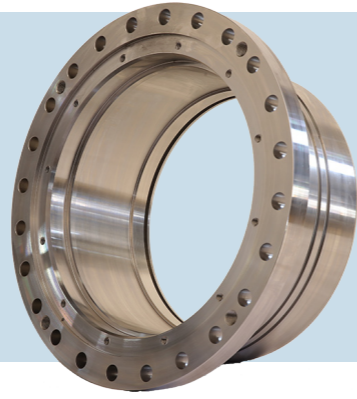
NO.	YEAR	DESCRIPTION	PROJECT	COUNTRY	METAL	QTY	CASTING WEIGHT
1	2020	Runner Blade	CHALLAWA	Nigeria	CA6NM	26	95
2	2022	Runner Blade	CHER	Nigeria	CA6NM Type2	26	215
3	2022	Runner Blade	CANELLES	Spain	CA6NM Type2	30	333
4	2018	Runner Blade	ACHWA SMALL	Uganda	CA6NM Type2	13	115
5	2018	Runner Blade	ACHWA LARGE	Uganda	CA6NM Type2	39	237

NO.	YEAR	DESCRIPTION	PROJECT	COUNTRY	METAL	QTY	CASTING WEIGHT
1	2018	Runner Blade	NMPA	Vietnam	CA6NM Type2	26	42
2	2019	Runner Blade	DAK TRUA-2-LARGE	Vietnam	CA6NM	30	340
3	2019	Runner Blade	DAKPSI 2B	Vietnam	CA6NM Type2	13	120
4	2019	Runner Blade	DAK TRUA2-SMALL	Vietnam	CA6NM Type2	30	165
5	2020	KAPLAN Blade	NGAN TRUOI HEP	Vietnam	CA6NM	15	338
6	2020	Runner Blade	IA GRANG 1 HP	Vietnam	CA6NM	28	39
7	2020	Runner Blade	NAM LUM-1	Vietnam	CA6NM Type2	26	26
8	2021	Runner Blade	NGAN TRUOI HEP	Vietnam	CA6NM Type1	6	252
9	2022	Runner Blade	NAM CUM 3	Vietnam	CA6NM Type2	26	160.2
10	2022	Runner Blade	NAM CUM 2	Vietnam	CA6NM Type2	26	81.4
11	2022	Runner Blade	NUOC BUOU	Vietnam	CA6NM Type2	26	27



# 3.

## More Products



NO.	YEAR	DESCRIPTION	PROJECT	COUNTRY	METAL	QTY	CASTING WEIGHT
1	2023	Band	PORTEZUELOS II	Argentina, South America	CA6NM	1	370
2	2023	Crown	PORTEZUELOS II	Argentina, South America	CA6NM	1	498
3	2021	Guidance	JESUITA	Brazil, South America	WCC	2	228.8
4	2021	Servomotor Body	JESUITA	Brazil, South America	WCC	2	678
5	2021	Servomotor Cover	JESUITA	Brazil, South America	WCC	2	235.6
6	2018	Runner Crown	POCO FUNDO	Brazil, South America	CA6NM	2	401
7	2018	Runner Band	POCO FUNDO	Brazil, South America	CA6NM	2	322
8	2019	Runner Cone	TORNALITO	Canada, North America	CA6NM	1	85
9	2023	Band	CARLOS LLERAS	Colombia, South America	CA6NM	1	1974
10	2023	Crown	CARLOS LLERAS	Colombia, South America	CA6NM	1	3081
11	2023	Band	ENCANTO	Costa Rica, Central America	CA6NM	1	462
12	2023	Crown	ENCANTO	Costa Rica, Central America	CA6NM	1	784

NO.	YEAR	DESCRIPTION	PROJECT	COUNTRY	METAL	QTY	CASTING WEIGHT
1	2020	Bearing Cartridge	FONTES NOVA	Brazil	Gx4CrNi 13-4+QT1	2	185
2	2020	Runner Crown	KABU 16 HEP	Burundi	CA6NM	1	640
3	2020	Runner Band	KABU 16 HEP	Burundi	CA6NM	1	376
4	2020	Bearing Cartridge	KABU 16 HEP	Burundi	Gx4CrNi 13-4+QT1	4	136
5	2022	Runner Cone	KABU-16	Burundi	CA6NM	1	50

NO.	YEAR	DESCRIPTION	PROJECT	COUNTRY	METAL	QTY	CASTING WEIGHT
1	2022	Runner Crown	KABU-16	Burundi	CA6NM	1	790
2	2022	Runner Band	KABU-16	Burundi	CA6NM	1	555

NO.	YEAR	DESCRIPTION	PROJECT	COUNTRY	METAL	QTY	CASTING WEIGHT
1	2020	Cylinder Nozzle Holder Front	PINALITO	Dominican Republic	Gx4CrNi 13-4+QT2	1	110
2	2020	Mouthpiece	PINALITO	Dominican Republic	G20MN5+QT	1	216
3	2020	Deflector	PINALITO	Dominican Republic	G20MN5+QT	1	257

NO.	YEAR	DESCRIPTION	PROJECT	COUNTRY	METAL	QTY	CASTING WEIGHT
1	2015	Runner Crown	ANI	India	CA6NM	3	283
2	2015	Runner Band	ANI	India	CA6NM	3	141
3	2018	LAB.RING	BHPL	India	GX4CRNI13-4+QT2	1	242
4	2018	RING	BHPL	India	GX4CRNI13-4+QT2	1	242
5	2018	LAB RING	BHPL	India	CA6NM	3	240
6	2018	RING	BHPL	India	CA6NM	3	165
7	2018	RUNNER CAP	BHPL	India	CA6NM	6	57
8	2018	LAB RING	BHPL	India	CA6NM	2	210
9	2018	RING	BHPL	India	CA6NM	2	160
10	2018	BEARING CARRIER	MAY HO HYDRO	India	GX4CRNI13-4+QT1	4	42
11	2019	JET DEFLECTOR	KASHANG HEP	India	GX4CRNI13-4+QT2	1	120
12	2019	JET DEFLECTOR	BASPA -II HEP	India	GX4CRNI13-4+QT2	4	393
13	2019	HY STANDARD	KASHANG HEP	India	GX4CRNI13-4+QT1	1	40
14	2019	TURBINE	KASHANG HEP	India	GR.230-450 W	1	49
15	2019	Runner Crown	MAY HO HYDRO	India	CA6NM	2	270
16	2019	Runner Band	MAY HO HYDRO	India	CA6NM	2	155
17	2019	HOUSING INNER	MAY HO HYDRO	India	GX4CRNI13-4	2	57

NO.	YEAR	DESCRIPTION	PROJECT	COUNTRY	METAL	QTY	CASTING WEIGHT
1	2022	Runner Blade	KAMENG HEP	India	CA6NM Type2	15	300
2	2022	Runner Blade	LHKH	India	CA6NM Type2	3	152
3	2022	Runner Blade	KOPILI HEP	India	CA6NM Type2	13	138
4	2022	Runner Blade	SANDHYA	India	Gx4CrNi 13-4+QT1	16	20
5	2023	Runner Blade	KARBI-LANGPI	India	CA6NM Type2	15	166.7
6	2023	Runner Blade	TASHIDING	India	CA6NM	15	261
7	2023	Runner Blade	REHAR	India	Gx4CrNi 13-4+QT1	52	233
8	2023	Runner Blade	JORETHANG 02	India	CA6NM	26	703
9	2023	Runner Blade	LOWER KOPILI 2.5MW	India	Gx4CrNiMo 16-5-1+QT	39	66
10	2019	LABYRINTH RING	SKHPL	India	CA6NM	2	156
11	2020	Deflector	MOYAR-3101	India	Gx4CrNi 13-4+QT1	9	118
12	2020	Deflector	MOYAR-3102	India	Gx4CrNi 13-4+QT1	3	105
13	2020	Deflector	SOKH	India	Gx4CrNi 13-4+QT1	20	55
14	2020	Bearing Busing	NAITWAR MORI HEP	India	Gx4CrNi 13-4+QT1	4	187
15	2020	Inner Housing	CHATHANKOTTUN-ADA	India	Gx4CrNi 13-4+QT1	3	54
16	2020	Bearing Bush	TEESTA URJA II	India	Gx4CrNi 13-4+QT1	2	355
17	2020	Labyrinth_CS	SKHPL	India	CA6NM	1	170
18	2020	Labyrinth_SS	SKHPL	India	CA6NM	1	245
19	2020	Bearing Carrier	SOKH	India	Gx4CrNi 13-4+QT1	2	300
20	2020	Bearing Carrier	PAKAL DUL	India	Gx4CrNi 13-4+QT1	8	730
21	2020	Bearing Carrier	TANMY	India	Gx4CrNi 13-4+QT1	4	198
22	2021	Mouth piece	MARHI	India	G20MN5+N	4	65.3
23	2021	Drain Boss	KOPILI HEP	India	CA6NM	2	54
24	2021	Runner Cone	PAKAL DUL	India	CA6NM	4	429
25	2021	Moving Seal	AA-OTHER PROJECTS	India	CA6NM	1	645
26	2021	Runner Band	BHILANGANA-3	India	CA6NM	1	529

NO.	YEAR	DESCRIPTION	PROJECT	COUNTRY	METAL	QTY	CASTING WEIGHT
27	2021	Runner Crown	BHILANGANA-3	India	CA6NM	1	1100
28	2021	Runner	TIRUPATI SPECIAL-ITY	India	CA6NM	2	36.24
29	2022	Runner Band	TEESTA-3	India	CA6NM	1	131
30	2022	Runner Crown	TEESTA-3	India	CA6NM	1	199
31	2022	Runner Cone	KOPILI	India	CA6NM	3	470
32	2022	Runner Crown	DIKSHI	India	CA6NM	3	882
33	2022	Runner Band	DIKSHI	India	CA6NM	3	615
34	2022	Runner Band	JOGINI-2	India	CA6NM	1	143
35	2022	Runner Crown	JOGINI-2	India	CA6NM	1	325
36	2022	Bearing Housing	02-1019928	India	CA6NM	10	12
37	2022	Shaft Seal Ring	TEESTA-4	India	CA6NM	2	427
38	2022	Lower_GV Bearing	PINNAPURAM-S	India	Gx4CrNi 13-4+QT1	52	61.35
39	2022	Middle_GV Bearing	PINNAPURAM-S	India	Gx4CrNi 13-4+QT1	52	65
40	2022	Bushing	PINNAPURAM (PNP)	India	Gx4CrNi 13-4+QT1	24	110
41	2022	Deflector	TEESTA-3	India	Gx4CrNi 13-4+QT2	5	572
42	2022	Crown	SANDHYA	India	CA6NM	1	678
43	2022	Band	SANDHYA	India	CA6NM	1	229
44	2022	Deflector	39349	India	FG300	1	27
45	2022	Bearing Housing Body	39247	India	FG300	1	310
46	2022	Deflector	39257	India	FG300	1	30
47	2022	Deflector	39313	India	FG300	1	33
48	2022	Bearing Housing Body	39325	India	FG300	1	510
49	2022	Bushing	PINNAPURAM (GANDHI SAGAR)	India	CA6NM	16	48.5
50	2022	Bearing Carrier-1	PANNIAR	India	CA6NM	2	47
51	2022	Bearing Carrier-2	PANNIAR	India	CA6NM	2	33
52	2022	Bearing Carrier-3	PANNIAR	India	CA6NM	2	16

NO.	YEAR	DESCRIPTION	PROJECT	COUNTRY	METAL	QTY	CASTING WEIGHT
53	2023	Cone	JALDHAKA-2	India	Gx4CrNi 13-4+QT1	1	69
54	2023	Band	TASHIDING	India	CA6NM	2	1520
55	2023	Band	REHAR	India	Gx4CrNi 13-4+QT1	4	993
56	2023	Crown	REHAR	India	CA6NM	4	1660
57	2023	Bearing Housing Lower	LOWER KOPILI	India	CA6NM	48	21.8
58	2023	Bearing Housing Middle	LOWER KOPILI	India	CA6NM	48	25
59	2023	Deflector	KHANGTANG	India	Gx4CrNi 13-4+QT1	6	13.5
60	2023	Bushing	GANDHI SAGAR	India	CA6NM	52	21
61	2023	Bushing	GANDHI SAGAR	India	CA6NM	52	21
62	2023	Band	LOWER KOPILI 2.5MW	India	Gx4CrNi 13-4+QT1	3	333
63	2023	Crown	LOWER KOPILI 2.5MW	India	Gx4CrNi 13-4+QT1	3	537
64	2021	Runner Crown	CHANGER	India	CA6NM	2	156
65	2021	Runner Band	CHANGER	India	CA6NM	2	110
66	2022	Runner Cone	RE-1	India	CA6NM	1	30.5
67	2022	Deflector	SOLDING	India	Gx4CrNi 13-4+QT1	6	22

NO.	YEAR	DESCRIPTION	PROJECT	COUNTRY	METAL	QTY	CASTING WEIGHT
1	2019	BEARING CARRIER	SION HEP	Indonesia	GX4CRNI13-4+QT1	4	75
2	2019	HOUSING INNER	SION HEP	Indonesia	GX4CRNI13-4	2	84
3	2020	Runner Crown	KARAI 7	Indonesia	CA6NM	2	297
4	2020	Runner Band	KARAI 7	Indonesia	CA6NM	2	113
5	2020	Runner Crown	KARAI 13	Indonesia	CA6NM	1	297
6	2020	Runner Band	KARAI 13	Indonesia	CA6NM	1	113
7	2021	Runner Band	KETAUN 3 HPP	Indonesia	CA6NM	3	455
8	2021	Runner Crown	KETAUN 3 HPP	Indonesia	CA6NM	3	402.8
9	2021	Bearing Carrier	KETAUN 3 HPP	Indonesia	CA6NM	6	114

NO.	YEAR	DESCRIPTION	PROJECT	COUNTRY	METAL	QTY	CASTING WEIGHT
1	2022	Bearing Carrier	ASAHAN-3	Indonesia	CA6NM	4	433
2	2022	Runner Band	YAENTU	Indonesia	CA6NM	2	359
3	2022	Runner Crown	YAENTU	Indonesia	CA6NM	2	591
4	2022	Bearing Carrier	YAENTU	Indonesia	Gx4CrNi 13-4+QT1	4	99.6
5	2022	Runner Cone	KETAUN 3 HPP	Indonesia	CA6NM	3	26
6	2022	Runner Band	SION HEP	Indonesia	CA6NM	1	640
7	2022	Runner Crown	SION HEP	Indonesia	CA6NM	1	840

NO.	YEAR	DESCRIPTION	PROJECT	COUNTRY	METAL	QTY	CASTING WEIGHT
1	2022	Band	AGRI	Italy	CA6NM	2	542
2	2022	Crown	AGRI	Italy	CA6NM	2	1380

NO.	YEAR	DESCRIPTION	PROJECT	COUNTRY	METAL	QTY	CASTING WEIGHT
1	2019	Runner Crown	TOMATA	Japan	CA6NM	3	414
2	2019	Runner Band	TOMATA	Japan	CA6NM	3	281
3	2019	Bearing Carrier	TOMATA	Japan	GX4CRNI13-4+QT1	6	78
4	2019	HOUSING INNER	TOMATA	Japan	GX4CRNI13-4	3	71
5	2020	Deflector	KORBU	Malaysia	Gx4CrNi 13-4+QT1	6	53
6	2021	Runner Crown	LA_CUCHILA	NA	CA6NM	1	427.7
7	2021	Runner Band	LA_CUCHILA	NA	CA6NM	1	376

NO.	YEAR	DESCRIPTION	PROJECT	COUNTRY	METAL	QTY	CASTING WEIGHT
1	2017	UPPER NOZZLE TIP	RUDI KHOLA - B	Nepal	CA6NM	2	152
2	2017	LOWEER NOZZLE TIP	RUDI KHOLA - B	Nepal	CA6NM	2	176
3	2017	DEFLECTOR TIP	RUDI KHOLA - B	Nepal	CA6NM	5	41
4	2017	UPPER NOZZLE TIP	UPALO KHIMTI	Nepal	CA6NM	2	375

NO.	YEAR	DESCRIPTION	PROJECT	COUNTRY	METAL	QTY	CASTING WEIGHT
1	2017	LOWEER NOZ-ZLE TIP	UPALO KHIMTI	Nepal	CA6NM	2	390
2	2017	DEFLECTOR TIP	UPALO KHIMTI	Nepal	CA6NM	5	64
3	2017	LOWEER NOZ-ZLE TIP	RUDI KHOLA - A	Nepal	CA6NM	2	248
4	2017	UPPER NOZ-ZLE TIP	RUDI KHOLA - A	Nepal	CA6NM	2	238
5	2017	DEFLECTOR TIP	RUDI KHOLA - A	Nepal	CA6NM	6	57
6	2018	HOUSING-2 PARTS	KALANGA GAD HEP	Nepal	GX4CRNI13-4+QT2	4	79
7	2019	INLET PIPE	UPPER KALANGA GAD	Nepal	G20MN5+QT	12	287
8	2019	Jet Deflector	UPPER KALANGA GAD	Nepal	GX4CRNI13-4+QT1	12	36
9	2020	Bearing Carrier	LIKHU	Nepal	Gx4CrNi 13-4+QT1	2	255
10	2021	Bottom Ring MARSYANGDI	MARSYANGDI	Nepal	Gx4CrNi 13-4+QT2	3	958
11	2021	Head Cover MARSYANGDI	MARSYANGDI	Nepal	Gx4CrNi 13-4+QT3	3	424
12	2021	Runner Crown	MADHYA TARAK-HOLA	Nepal	CA6NM	2	170
13	2021	Runner Band	MADHYA TARAK-HOLA	Nepal	CA6NM	2	115.5
14	2021	Shaft Seal	TINA	Nepal	CA6NM	3	85.6
15	2023	Deflector	LIKHU	Nepal	Gx4CrNi 13-4+QT1	6	70

NO.	YEAR	DESCRIPTION	PROJECT	COUNTRY	METAL	QTY	CASTING WEIGHT
1	2023	Cone	CHER	Nigeria	CA6NM	3	80.6
2	2020	JET DEFLECTOR	SVELGEN	Norway,Europe	Gx4CrNi 13-4+QT1	4	145
3	2020	DEFLECTOR	AURLAND	Norway,Europe	Gx4CrNi 13-4+QT1	12	552
4	2020	Lever	HENSFOSS	Norway,Europe	CA6NM	5	87
5	2021	Runner Band	KURASFOSSEN KRAFTWERK	Norway,Europe	CA6NM	1	649
6	2021	Runner Crown	KURASFOSSEN KRAFTWERK	Norway,Europe	CA6NM	1	833
7	2022	Cone	CANE	Spain	CA6NM TYPE2	2	178
8	2020	Guide Vane Lever	QAIROKKUM	Tajikistan, Central Asia	WCC	144	40

NO.	YEAR	DESCRIPTION	PROJECT	COUNTRY	METAL	QTY	CASTING WEIGHT
1	2019	Runner Crown	DAK TER-II	Vietnam	CA6NM	2	460
2	2019	Runner Band	DAK TER-II	Vietnam	CA6NM	2	361
3	2019	Runner Band	DAK TRUA2	Vietnam	CA6NM	2	124
4	2019	Runner Crown	DAK TRUA2	Vietnam	CA6NM	2	161
5	2020	Runner Crown	IA GRANG 1 HP	Vietnam	CA6NM	2	188
6	2020	Runner Band	IA GRANG 1 HP	Vietnam	CA6NM	2	218
7	2020	Runner Crown	NAM LUM	Vietnam	CA6NM	2	322
8	2020	Runner Band NAM LUM-1	NAM LUM	Vietnam	CA6NM	2	217
9	2020	Runner Band	DAK TER	Vietnam	CA6NM	2	359
10	2020	Runner Crown	DAK TER	Vietnam	CA6NM	2	460
11	2021	Runner Hub	NGTR 4	Vietnam	CA6NM	1	1088
12	2021	Bearing Carrier	NAM XE	Vietnam	CA6NM	4	132
13	2022	Bearing Carrier	NAM LAN	Vietnam	CA6NM	4	122
14	2022	Deflector	NAM LAN	Vietnam	CA6NM	12	44
15	2022	Runner Crown	NAM PI HEP	Vietnam	CA6NM	1	865
16	2022	Runner Band	NAM PI HEP	Vietnam	CA6NM	1	868
17	2022	Bearing Carrier	NAM CUM 2	Vietnam	CA6NM	4	139
18	2022	Bearing Carrier	NAM CUM 3	Vietnam	CA6NM	4	208
19	2022	Runner Band	NAM CUM 2	Vietnam	CA6NM	2	745
20	2022	Runner Crown	NAM CUM 2	Vietnam	CA6NM	2	838
21	2022	Runner Cone	NAM CUM 3	Vietnam	CA6NM	2	77
22	2022	Runner Cone	NAM CUM 2	Vietnam	CA6NM	2	53
23	2022	Runner Band	NUOC BUOU	Vietnam	CA6NM	2	278
24	2022	Runner Crown	NUOC BUOU	Vietnam	CA6NM	2	440
25	2022	Bearing Carrier	NUOC BUOU	Vietnam	Gx4CrNi 13-4+QT1	4	117

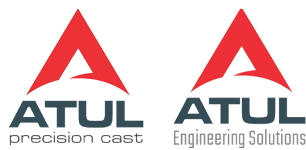
Atul Precision Cast - Gujarat, India

✉ [Info@atulprecisioncast.com](mailto:Info@atulprecisioncast.com)

☎ +91 9033933330

🌐 [www.atulprecisioncast.com](http://www.atulprecisioncast.com)

ATUL GROUP



ASSOCIATIONS

