

Castings par Perfectionism



Atul Precision Cast The One-Stop Solution For The Perfect Casting

ATUL PRECISION CAST

REACH US

91, 92 Balaji Industrial Estate,
Manda Dungar, Bhavnagar Road,
Rajkot - 360 003 (Gujarat, India)

CALL US

(+91) 98242 18179
(+91) 90339 33330

EMAIL

info@atulprecisioncast.com
sales@atulprecisioncast.com

Web: www.atulprecisioncast.com

Company Profile

Atul Precision Cast is a **ISO 9001:2015** Steel Casting Foundry, producing Quality Sand Castings in Carbon Steel, Alloy Steel, Stainless Steel, Duplex Stainless Steel and Nickel Based Alloys.

Our founder, Mr. Hitesh Gorasia, a mechanical engineer, developed the idea of a start-up which ultimately aimed to serve clients globally with its unique services incorporated with the employers' passion and skills for mechanical engineering and business development. This inspired him to set-up "Atul Precision Cast", with the aim to serve uniquely in the field of casting.

Atul Precision Cast manufactures products which have potential resistance to corrosion, durable, dimensional accuracy and products that are made from premium raw materials ergo assuring long product durability.

Atul Precision Cast is an ISO certified company 9001:2015. Currently, we employ 40 talented, experienced and skilled professionals, incorporated with modern technology and efficient tools. This has strengthened our capabilities like consulting for designs, construct models, develop casting simulation, patterns, strengthening, heat treatment, shot blasting, assembling, quality testing and logistics.



MISSION

To provide an expanded array of solutions with regard to casting and its outcomes. Effectiveness is guaranteed by approaching our jobs with passion and commitment.

We envision to maximize customer satisfaction by giving them one-stop cost effective and quality solutions within a quick turnaround time.

VISION



Founder of Atul Precision Casting, Mr. Hitesh Gorasia along with a partner technocrat has developed a one-stop solution in the foundry industry for casting.

His son, **Mr. Chintan Gorasia, a B.Tech in Metallurgy** is also taking steps in the conceptualization of Atul Precision Casting.

This perfection here is a combination of Mr. Hitesh Gorasia's leveraging long lasting experience in the foundry industry and Mr. Chintan Gorasia's experience and expertise in the new era of education in the metallurgy field.

Why Choose Us

- ✓ One stop solutions for perfect casting.
- ✓ Quick global delivery.
- ✓ Array of resources that assures the efficiency.
- ✓ Cost-effective and quality solutions within a quick turnaround time.
- ✓ A team of skilled manpower and modern technology ensures a superior production quality.
- ✓ Customized and diversified solutions which make our clients relax.

One-Stop-Shop

We offer all major casting processes under 1 roof i.e. Sand Castings, Centrifugal Castings and Precision Investment Castings. And that too in the broadest weight range – whether it is heavy castings weighing 2 tons or minute castings weighing as low as 5 grams, we offer it all.

With our in-depth knowledge of various alloys, we offer castings in modified and enhanced MOCs to get the best life and enhanced physical properties. Alloys may be chosen from a broad spectrum as per the application.

Alloy Selection

Product Re-design

Our full-fledged design department is well experienced to re-design the product to enhance the quality, while keeping the usability factor intact. Products may be converted from Fabrication to castings or from one of the existing casting process to the alternative more suitable process. Detailed CAD models ensure the fitment and design aspects.

We also offer castings in fully finished condition as ready to fit parts. This saves you time, efforts and ultimately money.

Ready to Fit Parts

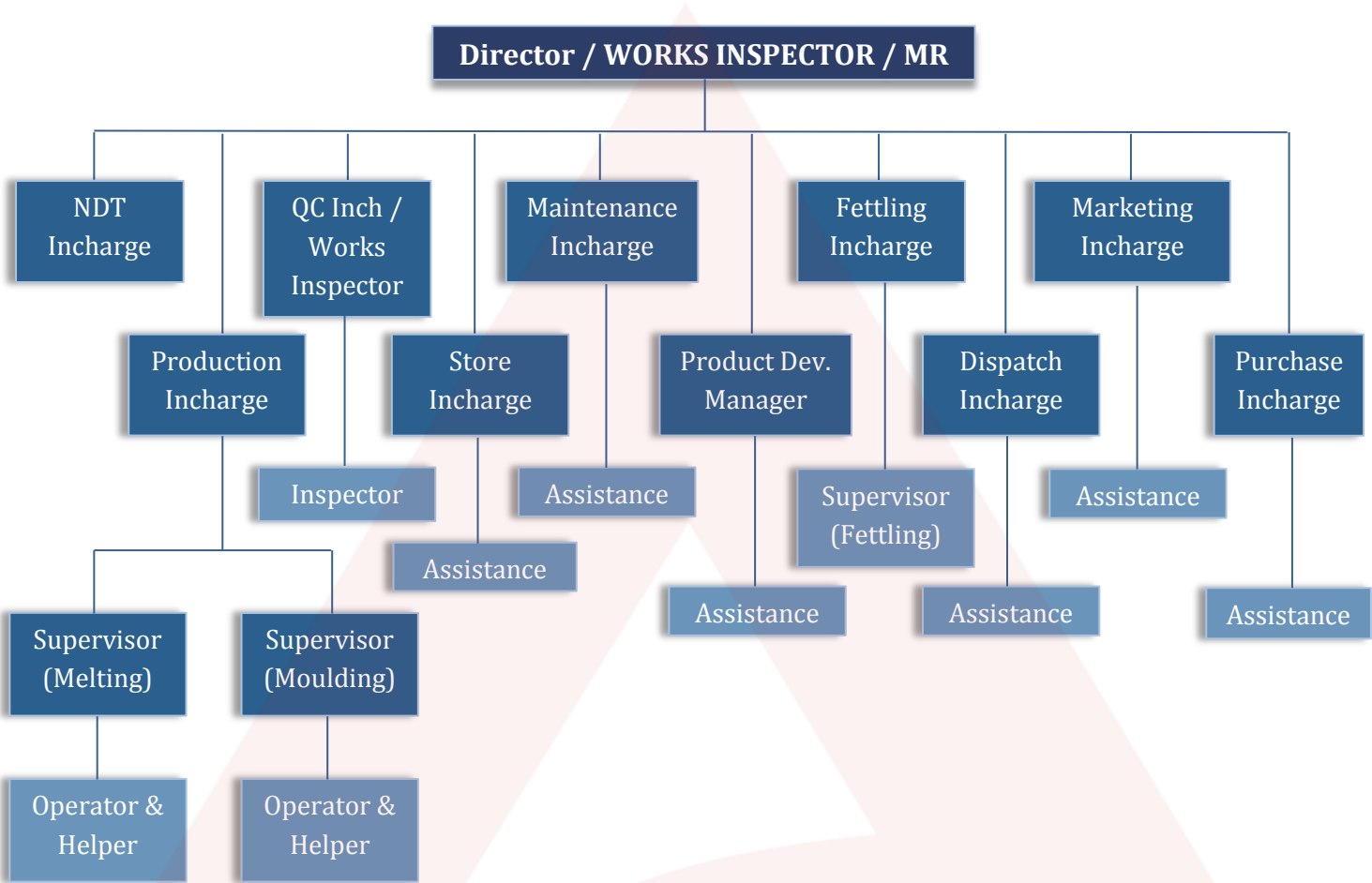
ISO 9001 : 2015 Steel Casting Foundry

We can produce any Special Metal Compositions as per Customer's Specification or International Standard Specifications like IS, ASTM, AISI, SAE, DIN, EN, GHOST, JIS.

ISO 9001:2015& PED 97/23/EG, AD 2000 Merkblatt W O



Organization Chart



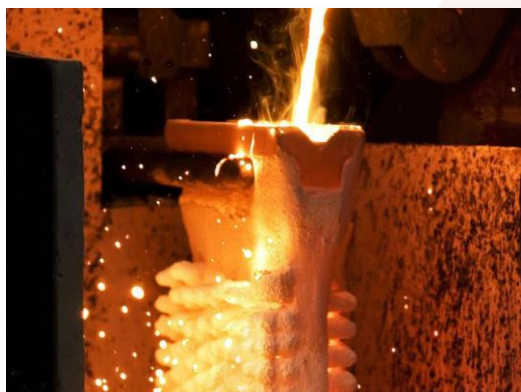
What We offer

➤ SAND CASTING

Atul precision cast has their own resources to provide quality products that are long-lasting by using sand casting techniques. Atul precision casting working with no back process will give environment-friendly output whereas with green sand technique will give quality outcomes at low cost. It produces 600 MT of quality stainless steel and alloy steel casting. They used to provide superior quality products which are accurate in dimensions and flawless for the customers. The products are highly appreciated by the clients for its longer life and corrosion resistance.



➤ INVESTMENT CASTING



Investment Casting is synonymous with creators of products which have dimensional accuracy, a must feature for investment casting, in which castings of complex designs are needed. Since every used wax pattern is destroyed after use, a large number of such wax patterns are needed and Atul Precision Cast does not have quantity production as an obstacle. In fact, the large-scale production makes them cost-effective in an expensive technology.

➤ CENTRIFUGAL CASTING

Atul Precision Cast is built on the foundation of a highly skilled and experienced workforce, allowing them to produce castings that require precision. Their stronghold in the usage of premium raw materials and various alloys of nickel base and steel enables them to create superior quality products using the Centrifugal Casting method. Atul Precision Cast prides itself on delivering products of high durability and corrosion resistant, both attributes forming an integral part of Centrifugal Casting. Equipped with the latest technology like shot blasting, Atul Precision carves a niche for itself in this area.



Industries Served

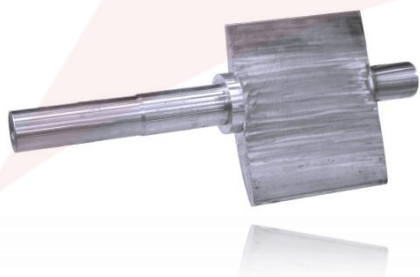
We have well equipped Production Unit, which includes various Departments & Facilities. We confidently meet the technical requirements in terms of intricacy of the casting and specifications. We have the different departments with below mentioned facilities:

| HYDRO POWER |
|-------------------------|
| Wicket Gates |
| Francis Runner Blade |
| Kaplan Runner Blade |
| Nozzle Mouth Piece |
| Deflector |
| Bearing Carrier For MIV |
| Runner Band |
| Runner Crown |

| PUMP INDUSTRY |
|-----------------|
| Impellers |
| Diffusers |
| Pump Casing |
| Bearing Housing |
| Stuffing Box |
| Lobe Pump |

| VALVES INDUSTRY |
|-------------------------|
| Ball Valve Casting |
| Butterfly Valve Casting |
| Plug Valve |
| Valve Body Casting |
| Valve Casting |

| GENERAL ENGINEERING |
|--|
| Engineering Castings |
| Earth excavation components like different types of quick couplers |



Machineries & Facilities

- ✓ Continuous Sand Mixture for Chemical bonded Sand
- ✓ Inductotherm make Induction Furnace of 300 Kgs & 500 Kgs
- ✓ Ladle Pre-Heater
- ✓ Shot Blasting Machine
- ✓ 30 HP Compressor from “FS Curtis” for Uninterrupted Air Supply
- ✓ M. P. I. Machines
- ✓ 20 Tons UTM machine for Mechanical Testing
- ✓ Portable Hardness Tester
- ✓ Digital Hardness Tester
- ✓ ERP Software for Management
- ✓ Sand Reclamation Plant
- ✓ Electric Heat Treatment Furnace with fully PLC controlled
- ✓ Diesel based Heat Treatment Furnace with fully PLC controlled
- ✓ In house pattern shop
- ✓ Spectrometer for Chemical Analysis
- ✓ Grinders of numerous types appropriate for every application
- ✓ D. P. Testing Facility
- ✓ U. T. Machines for Ultrasound Testing
- ✓ Surface Plate Granite
- ✓ Simulation Software for Methoding of Casting
- ✓ Add Value Implementation
- ✓ Centrifugal Casting
- ✓ Various types of conventional lathe machines
- ✓ CNC Machine HASS
- ✓ VMC Machine HASS
- ✓ Wire Cutting Machine
- ✓ Sand Mold Hardness Tester
- ✓ Heat treatment with water quenching facility
- ✓ Investment casting export
- ✓ Capacity Of 1 ton induction furnace installed,

An Essence of Our Efforts



Our Valuable Customers



ANDRITZ
Hydro



VOITH



B·A Metals Co., Ltd.



CSFR
inox
The power of reliability



AUDCO
INDIA
LIMITED



E.S.A.
ENERGIA SERVIZI AMBIENTE



R&D
MULTIPLES
An ISO 9001 Certified Company



Continental Disc
Corporation



बी पी सी
bpc



investaTM
Performance in everything



WPIL Limited



fives
ultimate machines
ultimate factory



LARSEN & TOUBRO



Pladdet



ROLEX
ROLLED RINGS

Materials We Cast

| | |
|--------------------|--------------------|
| ✓ A-216 Gr. WCB | ✓ H-11 |
| ✓ A-351 Gr. CF-8 | ✓ H-13 |
| ✓ A-351 Gr. CF-8M | ✓ D2 |
| ✓ A-351 Gr. CF 3M | ✓ HK-40 |
| ✓ A-743 Gr. CA 6NM | ✓ AISI 8620 |
| ✓ A-743 Gr. CA-15 | ✓ A-352 GR;LCB,LCC |

Capabilities

Atul Precision Cast, based in Gujarat is one of the leading manufacturers and suppliers of stainless steel and alloy steel globally. With their huge team of skilled manpower and modern technology, the company ensures a superior production quality. The entire team works under the able leadership and guidance of Mr. Hitesh Gorasia (B.E. Mechanical) and his son Mr. Chintan Gorasia (B. Tech Metallurgy). The father-son duet is a perfect blend to impart the traditional techniques and the modern approaches to all the productions being carried out at Atul Precision Cast.

We are regularly coming up with innovations to provide the best possible solution to our customers so that they receive the highest quality industry experience.

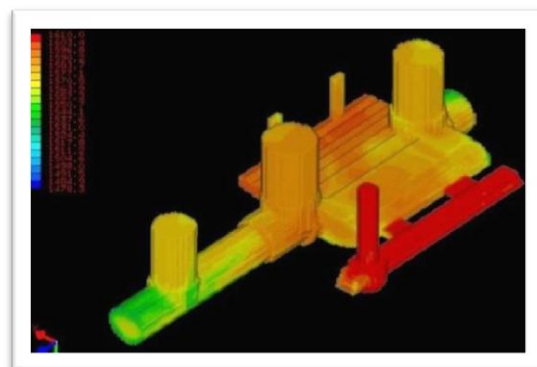
DESIGN CONSULTING & MODEL CONSTRUCTION



At Atul Precision cast we take care of every basic requirement starting from the initial design to the complete quality testing. The Design Consulting and Model Construction is carried out using one of the best 3D software, Creo. Engineers with specialized technical knowledge of the Creo work to deliver the best concept development, designing and analysis to meet the project requirements.

SIMULATION & CASTING

Once the designing of a product has been completed, computer software is used to test the physical strength and other parameters of the production to be carried out simultaneously. We use computer-based technology to predict these physical parameters. For optimization of product strength, hardness and other parameters casting are carried out via soft casting technique available to us which ensures cent percent accuracy. The product is then moulded into the required shape using pattern shop in house.



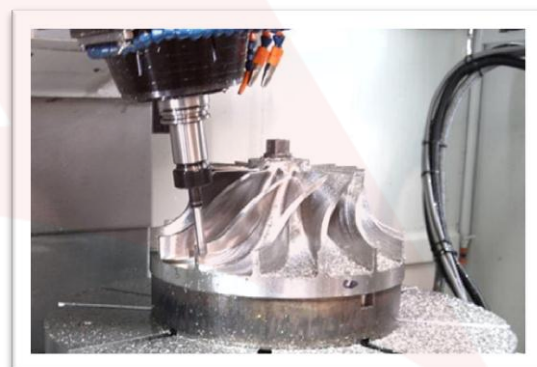
STRENGTH ENHANCEMENT



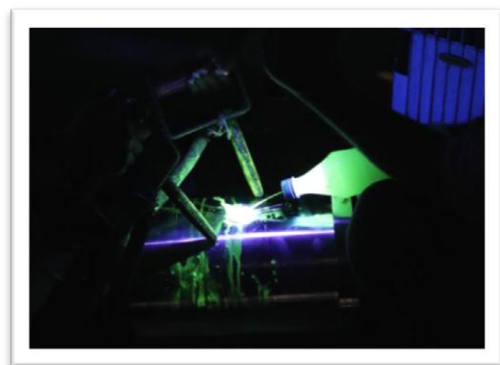
Post-production, heat treatments and shot blasting are used to strengthen the products. We use different heat treatment techniques as per the product requirement to enhance the hardness of the product.

MECHANICAL MACHINING & ASSEMBLY

Atul Precision Cast also has Mechanical Machining and Assembly capabilities. This means that our assembly precision and accuracy levels are very high so you are guaranteed to receive a superior product.



QUALITY CONTROL & TESTING



We also have a good process of Quality Control in place. Quality testing is done regularly and logistics are maintained using the NDT testing procedure. This includes Diepenitrant Testing (DP) and Magnetic Particle Testing (MPT) or Ultrasonic Testing (UT) and UTM which is carried out in-house. The logistics and data from all these tests are recorded.



ATUL
precision cast

ATUL PRECISION CAST

REACH US

91, 92 Balaji Industrial Estate,
Manda Dungar, Bhavnagar Road,
Rajkot - 360 003 (Gujarat, India)

CALL US

(+91) 98242 18179
(+91) 90339 33330

EMAIL

info@atulprecisioncast.com
sales@atulprecisioncast.com

Web: www.atulprecisioncast.com

